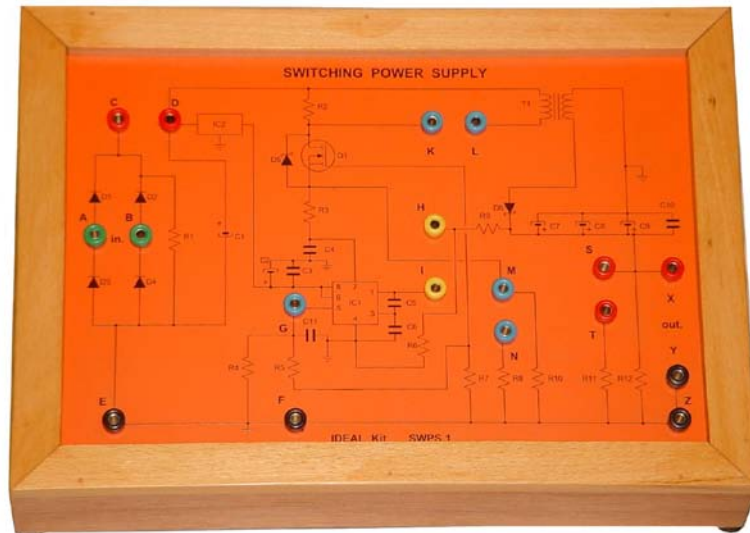


No 6000 | SWITCHING POWER SUPPLY EXPERIMENTS BOARD



Technical specifications :

The Switching Power Supply experiments board consists of a printed circuit board in a wooden frame. On the upper part of the board are the circuit imprints of the components with the necessary 4mm sockets for the power supply and measuring instruments connections.

The dimensions of the board are 20x30cm. On the lower side of the printed circuit board are mounted the components that are protected by a transparent plexi glass cover fixed on the lower sides of the frame. Through this plexi glass cover the students can identify the various components.

The board includes the student's – instructor's experiments manual written according the specifications of the pedagogical institute (experiment's object, execution etc.)

EXPERIMENTS COVERED

- Power Supplies in general
- Linear Power Supplies
- Switching Power Supplies
- Rectification – Regulation
- Pulse oscillator – The MOSFET as an electronic switch
- Study of a switching power supply with a transformer – Output voltage control
- Overload or Short circuit protection of a switching power supply